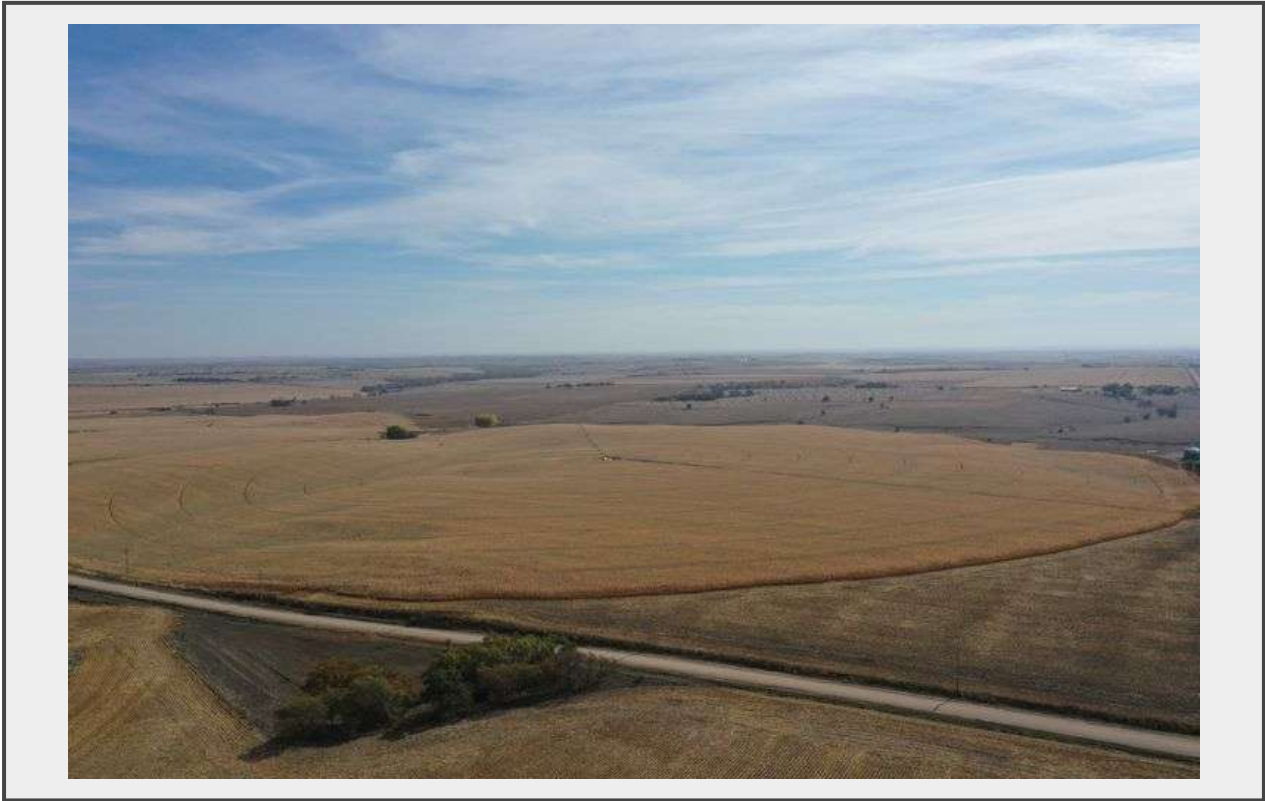


**Sale Name:** Harlan County Irrigated Farms

**LOT 2 - Tract 2**



**Description**

**Tract 2 (Per Assessor) – 161 +/- Acres**

Irrigated Acres – 132.00 +/-

Dryland Acres – 16.00 +/-

Grass Acres – 8.00 +/-

Other Acres – 5.00 +/-

Real Estate Taxes – \$ 5,398.29

Legal Description – Northwest 1/4 Section 11, Township 3 North, Range 18 West

Well Information – G-068081, drilled April 1982, 1,640 gpm, 147' static level, 167' pumping level, 280' well depth.

Irrigation Information – 10-tower Zimmatic pivot, Caterpillar power unit, diesel tanks, gearhead, well shed, and generator included.

Located in the Lower Republican NRD and has certified irrigation rights for 132 acres. Water use in the area is regulated and the 2023 allocation for the next five years is 45". In addition, the farm has 9" of carryover from the previous allocation. For more information, please contact the Lower Republican Natural Resources District, (308) 928-2182.

Additional Information – 20,000 +/- bushel grain bin included in the sale.

Driving Directions – From Holdrege, NE travel south on Highway 183 for 13 miles and head east on 719 Road for 2 miles. The farm will be on the southeast corner of 719 Road and P Road.

**Quantity: 1**



<https://bid.agwestland.com/>